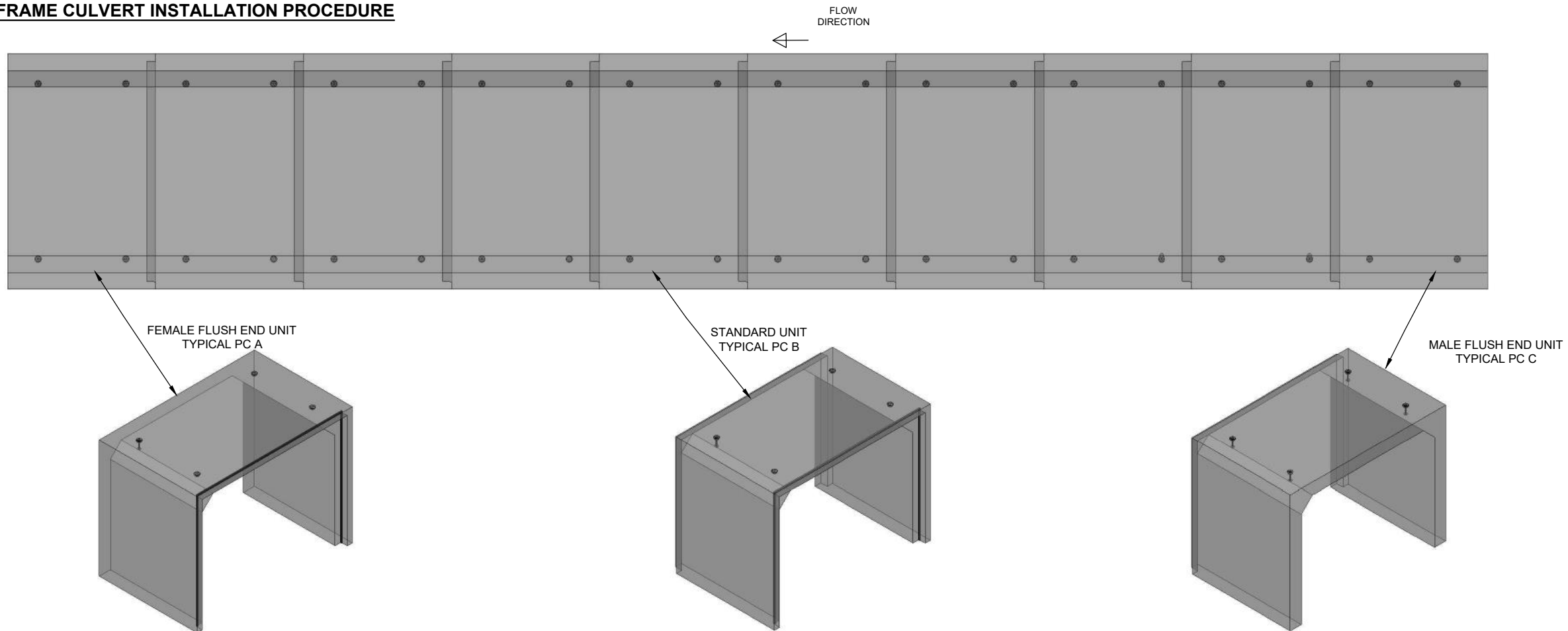


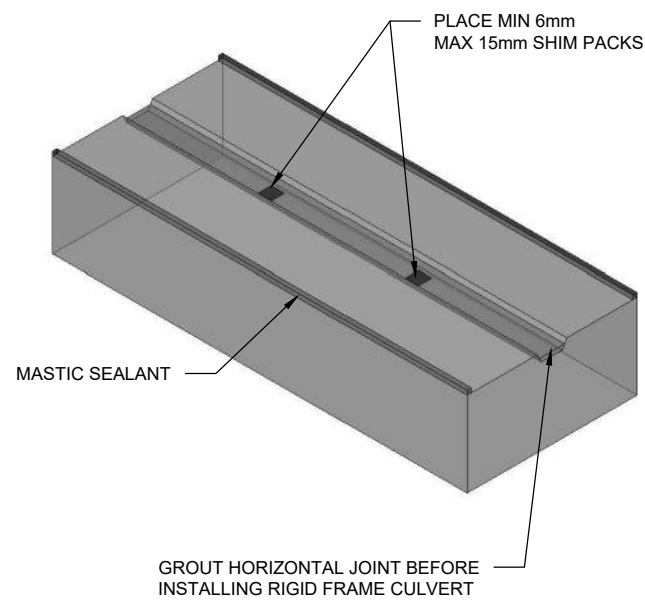
RIGID FRAME CULVERT INSTALLATION PROCEDURE



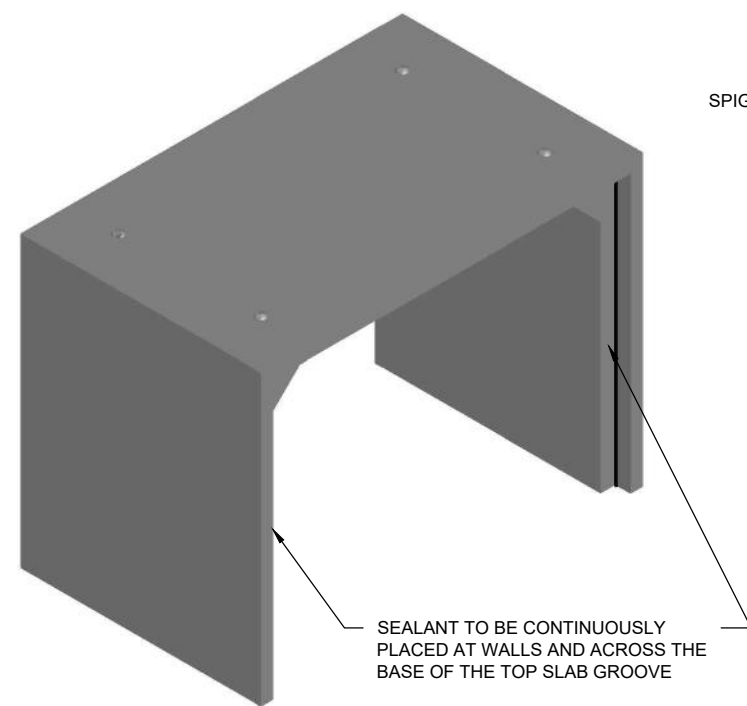
5598 POWER ROAD
OTTAWA, ONTARIO K1G 3N4
TEL: 613 822 1488



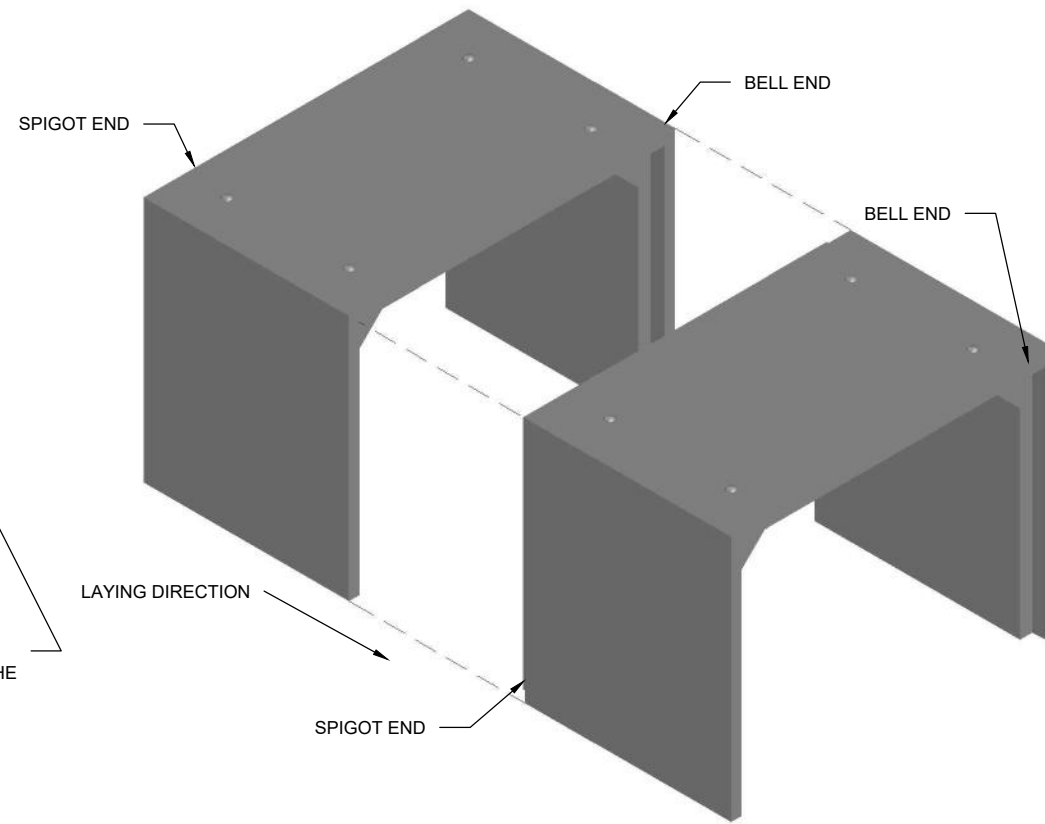
PIECE OVERVIEW & TYPICAL INSTALLATION PROCEDURE



TYPICAL FOOTING DETAIL



BUTYL MASTIC PLACEMENT DIAGRAM



TYPICAL PLACEMENT DETAIL

SIZE:	RIGID FRAME CULVERT - SIZE VARIES
NAME:	RIGID FRAME CULVERT INSTALLATION
CUSTOMER:	
PROJECT:	
SALES REP:	
WEIGHT (TONNE):	
SALES ORDER NUMBER:	
CONTRACT DUE DATE:	
PRODUCT SPECIFICATIONS	
DESIGNED TO: CHBDC	
DEPTH OF FILL:	MIN: - METERS
	MAX: - METERS
CONCRETE:	MIX:
	STRENGTH @ 28 DAYS: 40 MPA
REBAR COVER:	50 ± 10 MM

- NOTES:**
- ALL LENGTHS VARY
 - PIECE A TYPICALLY INSTALLED FIRST, THEN PIECE B WITH PIECE C TO BE INSTALLED LASTLY
 - WHERE SEALANT IS SPLICED, EXTEND SEALANT STRIPS SIDE BY SIDE FOR A MINIMUM OF 250 mm AND PRESS THE SIDES OF SEALANT AGAINST EACH OTHER
 - GRANULAR BASE MATERIAL MUST BE PREPARED AS PER OPSS 422 AND OPSS 501 UNLESS OTHERWISE SPECIFIED

DRAWING ON:	2020-03-19
DRAFTED BY:	M.A
CHECKED BY:	I.N
SCALE:	REFER TO DRAWINGS

REVISIONS		
NO.	DESCRIPTION	DATE
01	INITIAL DRAFT	19/03/2020
02	FOR RELEASE	23/03/2020