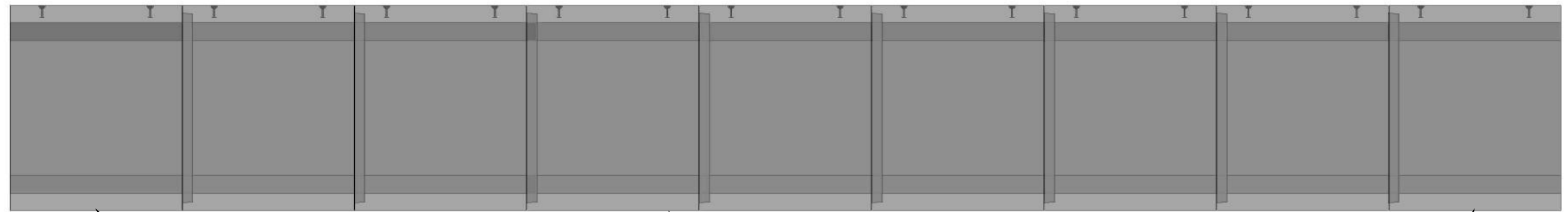
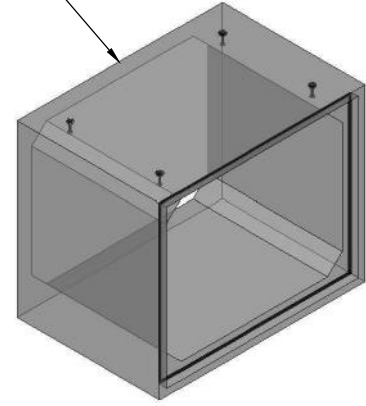


BOX CULVERT INSTALLATION PROCEDURE

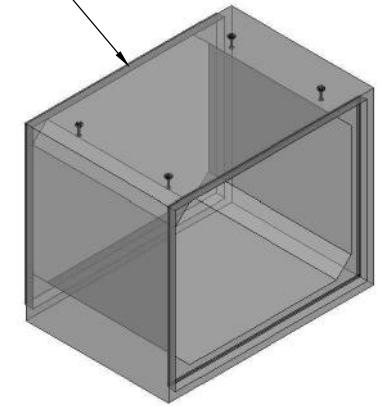
FLOW DIRECTION
←



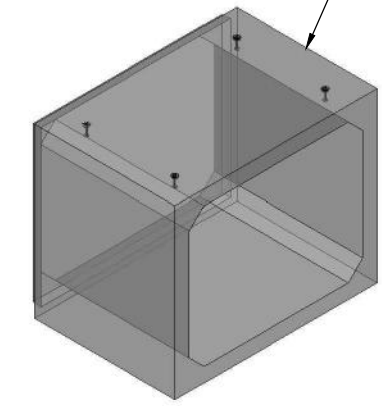
FEMALE FLUSH END UNIT
TYPICAL PC A



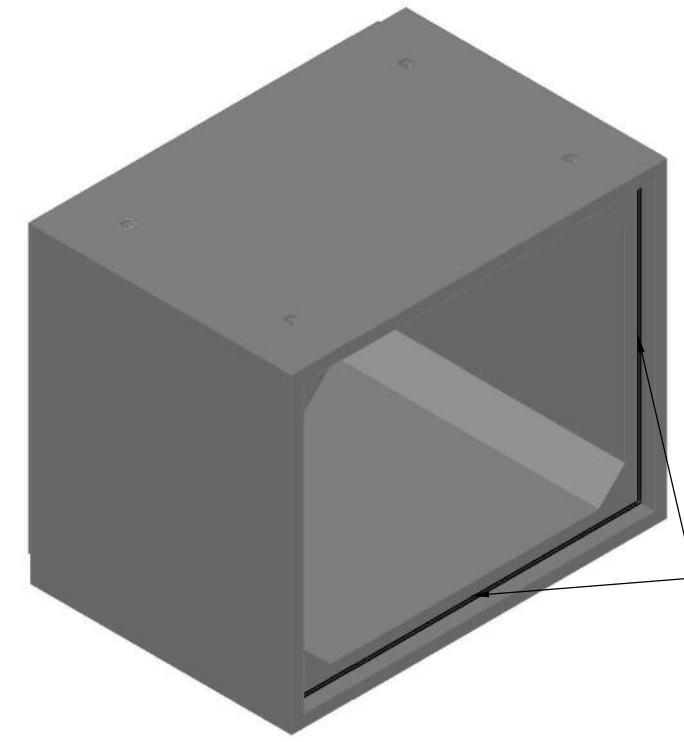
STANDARD UNIT
TYPICAL PC B



MALE FLUSH END UNIT
TYPICAL PC C

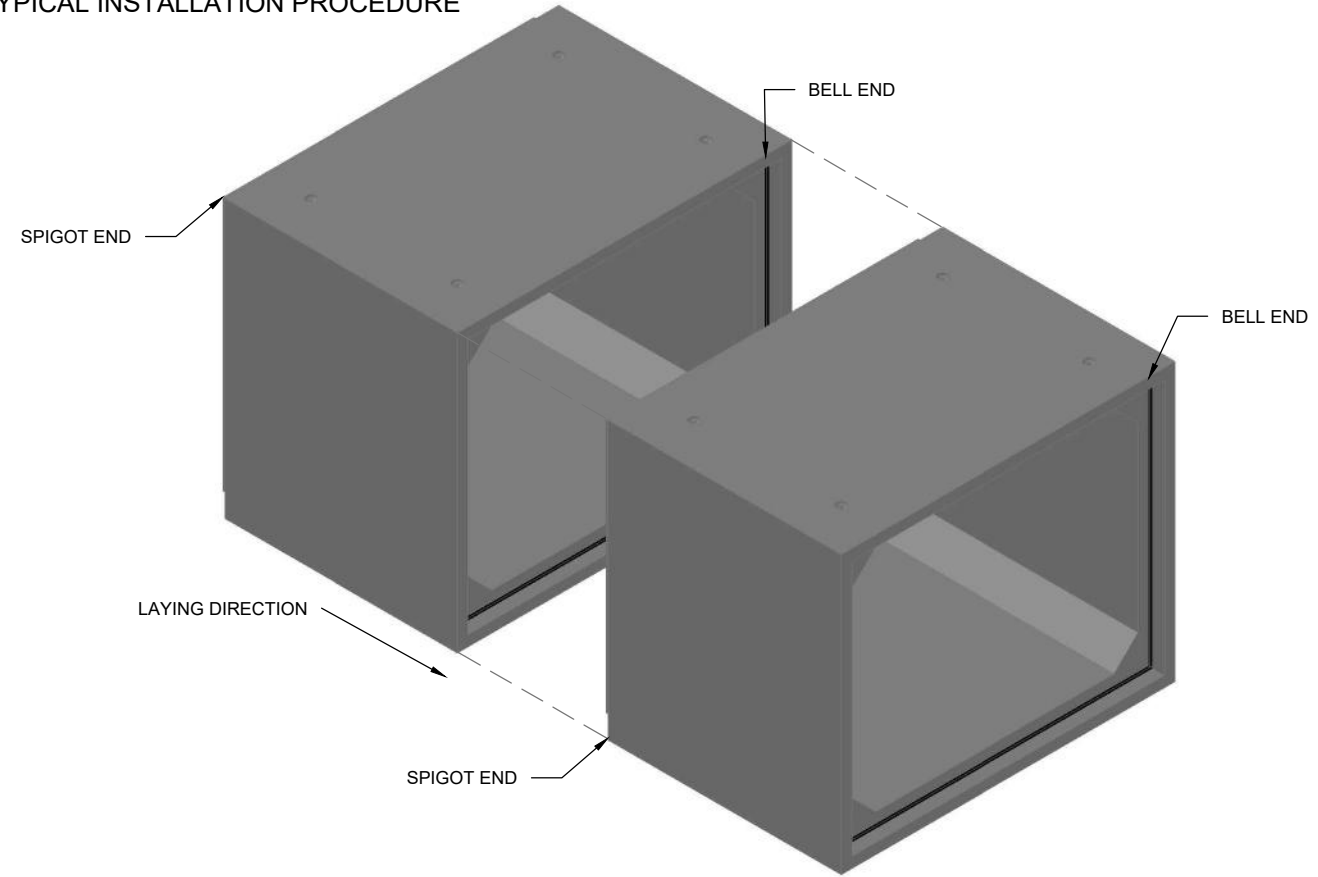


PIECE OVERVIEW & TYPICAL INSTALLATION PROCEDURE



BUTYL MASTIC PLACEMENT DIAGRAM

SEALANT TO BE CONTINUOUSLY PLACED AT BASE OF BOTTOM SLAB GROOVE, WALLS AND ACROSS THE BASE OF THE TOP SLAB GROOVE



TYPICAL PLACEMENT DETAIL



5598 POWER ROAD
OTTAWA, ONTARIO K1G 3N4
TEL: 613 822 1488

SIZE:	BOX CULVERT - SIZE VARIES
NAME:	BOX CULVERT INSTALLATION
CUSTOMER:	
PROJECT:	
SALES REP:	
WEIGHT (TONNE):	
SALES ORDER NUMBER:	
CONTRACT DUE DATE:	
PRODUCT SPECIFICATIONS	
DESIGNED TO: CHBDC	
DEPTH OF FILL:	MIN: - METERS MAX: - METERS
CONCRETE:	MIX: STRENGTH @ 28 DAYS: 40 MPA
REBAR COVER:	50 ± 10 MM

- NOTES:**
- ALL LENGTHS VARY
 - PIECE A TYPICALLY INSTALLED FIRST, THEN PIECE B WITH PIECE C TO BE INSTALLED LASTLY
 - WHERE SEALANT IS SPICED, EXTEND SEALANT STRIPS SIDE BY SIDE FOR A MINIMUM OF 250 mm AND PRESS THE SIDES OF SEALANT AGAINST EACH OTHER
 - GRANULAR BASE MATERIAL MUST BE PREPARED AS PER OPSS 422 AND OPSS 501 UNLESS OTHERWISE SPECIFIED

DRAWING ON:	2020-03-19
DRAFTED BY:	E.Z
CHECKED BY:	I.N
SCALE:	REFER TO DRAWINGS

REVISIONS		
NO.	DESCRIPTION	DATE
01	INITIAL DRAFT	18/03/2020
02	FOR RELEASE	19/03/2020