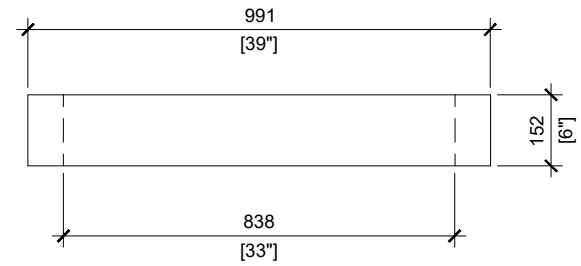
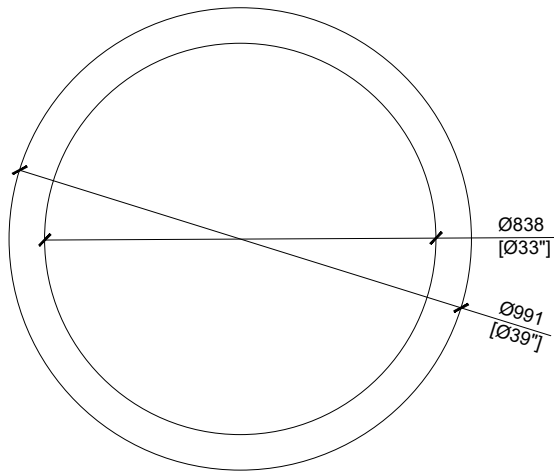


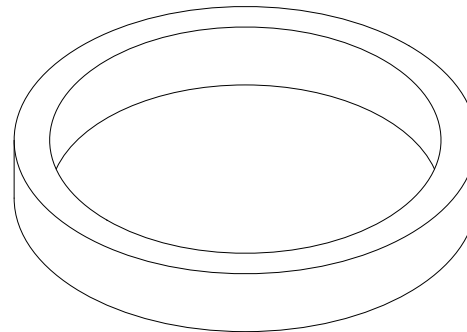
FRONT VIEW  
SCALE 1:16



SIDE VIEW  
SCALE 1:16



PLAN VIEW  
SCALE 1:16



**GENERAL NOTES:**

1. AIRCRAFT CABLES FOR LIFTING
2. DELIVERY IS MADE BY CRANE-EQUIPPED TRUCKS
3. EXCAVATION MUST BE READY, SAFE AND ACCESSIBLE FOR UNLOADING FROM THE REAR OF THE TRUCK.
4. MIN OVERHEAD CLEARANCE OF 18FT IS REQUIRED
5. ALL UNITS MUST BE HANDLED WITH PROPER LIFTING EQUIPMENT (I.E. SPREADER BAR)
6. FOR INSTALLATIONS ON STONE BEDDING, THE ALLOWABLE BEARING PRESSURE AT THE UNDERSIDE OF THE VAULT BOX SECTION SHALL BE A MINIMUM OF 150kPa ( S.L.S.)
7. THIS BEARING PRESSURE IS ASSUMED AND SHALL BE CONFIRMED BY A QUALIFIED GEOTECHNICAL ENGINEER PRIOR TO INSTALLATION OF THE VAULT



MANUFACTURED:  
OTTAWA, ON  
613-822-1488

www.powerprecast.com

CONCRETE TYPE: SCC  
CONCRETE: 45MPa  
AIR CONTENT: 6.5% ± 1.5%  
REINFORCEMENT : STEEL TO CSA CAN  
A23.4-05 / A23.3. G30.18 Fy=400MPa

WEIGHT:  
180bs / 82kg

SHEET:  
1/1

DWG NO.  
E - 2.13

DRAWN BY:  
E.ZHOU

DATE:  
FEB/2020

Adjuster Ring OD 39" x ID 33" x 6" High

PPS REFERENCE: 409163