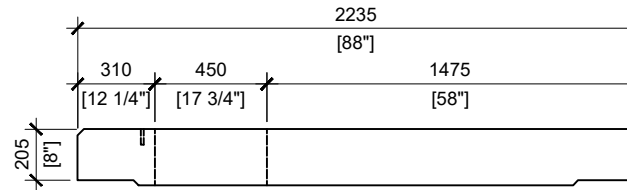


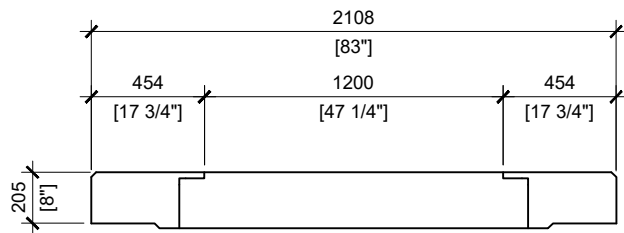
TOP VIEW PAD
SCALE 1:30



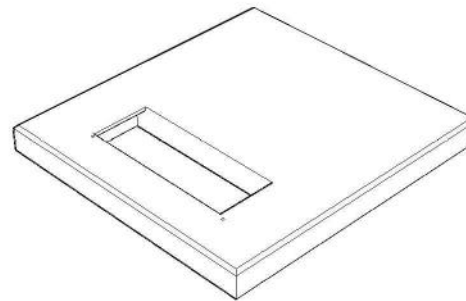
RIGHT VIEW PAD
SCALE 1:30



19mm FERRULE INSERT
2 REQUIRED



SECTION A
SCALE 1:30



GENERAL NOTES:

1. DELIVERY IS MADE BY CRANE-EQUIPPED TRUCKS
2. EXCAVATION MUST BE READY, SAFE AND ACCESSIBLE FOR UNLOADING FROM THE REAR OF THE TRUCK.
3. MIN OVERHEAD CLEARANCE OF 18FT IS REQUIRED
4. ALL UNITS MUST BE HANDLED WITH PROPER LIFTING EQUIPMENT (I.E. SPREADER BAR)
5. FOR INSTALLATIONS ON STONE BEDDING, THE ALLOWABLE BEARING PRESSURE AT THE UNDERSIDE OF THE VAULT BOX SECTION SHALL BE A MINIMUM OF 150kPa (S.L.S.)
6. DESIGNED TO FIT UCS0025 SWITCHING MANHOLE BASE
7. AS PER HYDRO OTTAWA UCS0035



MANUFACTURED:
OTTAWA, ON
613-822-1488

www.powerprecast.com

CONCRETE TYPE: SCC
CONCRETE: 45MPa
AIR CONTENT: 6.5% ± 1.5%
REINFORCEMENT : STEEL TO CSA CAN
A23.4-05 / A23.3. G30.18 Fy=400MPa

WEIGHT:
4,398lbs / 1,999kg

SHEET:
1/1

DWG NO.
E - 2.11

DRAWN BY:
E.ZHOU

DATE:
DEC/2019

**HYDRO MANHOLE
TRANSFORMER PAD**

REFERENCE HYDRO OTTAWA UCS0035
PPS REFERENCE: 409211