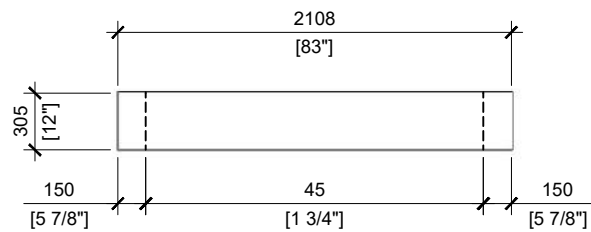
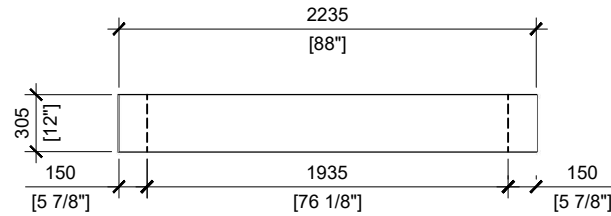


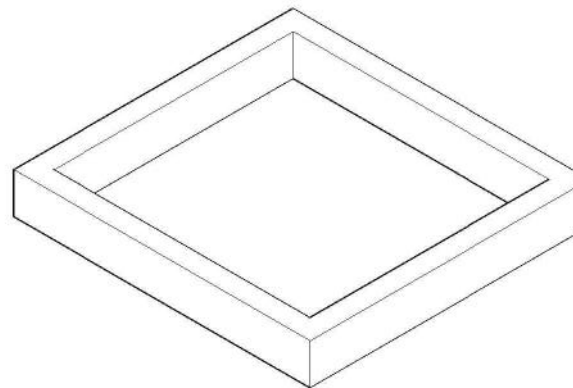
TOP VIEW
SCALE 1:40



SECTION A
SCALE 1:40



SIDE VIEW
SCALE 1:40



GENERAL NOTES:

1. DELIVERY IS MADE BY CRANE-EQUIPPED TRUCKS
2. EXCAVATION MUST BE READY, SAFE AND ACCESSIBLE FOR UNLOADING FROM THE REAR OF THE TRUCK.
3. MIN OVERHEAD CLEARANCE OF 18FT IS REQUIRED
4. ALL UNITS MUST BE HANDLED WITH PROPER LIFTING EQUIPMENT (I.E. SPREADER BAR)
5. FOR INSTALLATIONS ON STONE BEDDING, THE ALLOWABLE BEARING PRESSURE AT THE UNDERSIDE OF THE VAULT BOX SECTION SHALL BE A MINIMUM OF 150kPa (S.L.S.)
9. DESIGNED TO CAN/CSA-S6-06 CL-625-ONT TRUCK LIVE LOADING
10. AS PER HYDRO OTTAWA UCS0025



MANUFACTURED:
OTTAWA, ON
613-822-1488

www.powerprecast.com

CONCRETE TYPE: SCC
CONCRETE: 45MPa
AIR CONTENT: 6.5% ± 1.5%
REINFORCEMENT : STEEL TO CSA CAN
A23.4-05 / A23.3. G30.18 Fy=400MPa

WEIGHT:
4,959lbs / 2,254kg

SHEET:
1/1

DRAWN BY:
E.ZHOU

DWG NO.
E - 2.10

DATE:
DEC/2019

OTTAWA DYDRO MANHOLE SPACER
for SWITCH TRANSFORMER PAD

REFERENCE HYDRO OTTAWA UCS0025 (Riser)
PPS REFERENCE: 409212