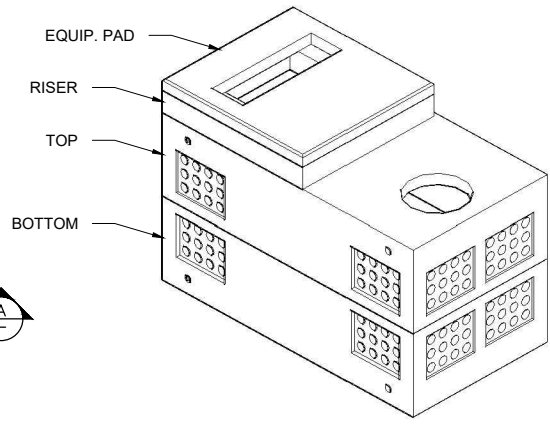


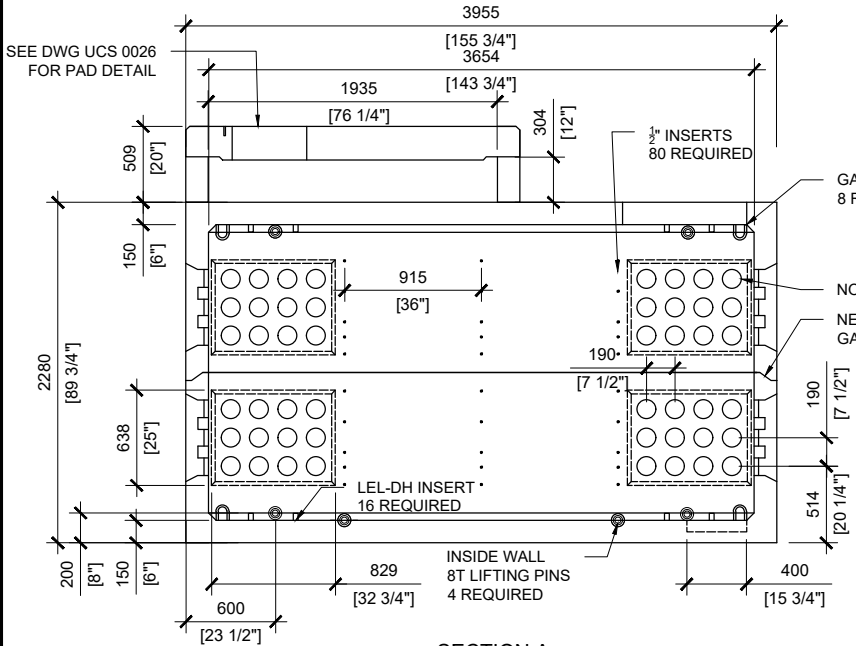
TOP VIEW  
SCALE 1:50



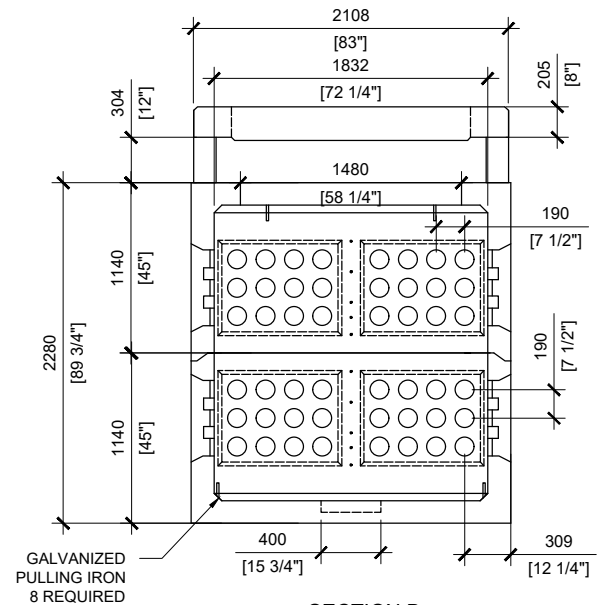
8T 6-3/4" LIFTING PIN  
12 REQUIRED

**GENERAL NOTES:**

1. CABLE ENTRY OPENINGS - 4-3/4" PVC SEALS .
2. DELIVERY IS MADE BY CRANE-EQUIPPED TRUCKS
3. EXCAVATION MUST BE READY, SAFE AND ACCESSIBLE FOR UNLOADING FROM THE REAR OF THE TRUCK
4. MIN OVERHEAD CLEARANCE OF 18FT IS REQUIRED
5. ALL UNITS MUST BE HANDLED WITH PROPER LIFTING EQUIPMENT (I.E. SPREADER BAR)
6. GALVANIZED PULLING IRONS MUST NOT BE USED FOR LIFTING
7. FOR INSTALLATIONS ON STONE BEDDING, THE ALLOWABLE BEARING PRESSURE AT THE UNDERSIDE OF THE VAULT BOX SECTION SHALL BE A MINIMUM OF 150kPa ( S.L.S.)
8. THIS BEARING PRESSURE IS ASSUMED AND SHALL BE CONFIRMED BY A QUALIFIED GEOTECHNICAL ENGINEER PRIOR TO INSTALLATION OF THE VAULT
- 9.
10. THE TRANSFORMER SHOULD BE UNIFORMLY DISTRIBUTED AND THE EDGE OF THE TRANSFORMER BASE SHALL BE SET WITHIN 150MM OF THE INTERIOR DIMENSIONS FOR THE BASE
11. DESIGNED TO CAN/CSA-S6-06 CL-625-ONT TRUCK LIVE LOADING
12. AS PER HYDRO OTTAWA UCS0025



SECTION A  
SCALE 1:50



SECTION B  
SCALE 1:50



**MANUFACTURED:**  
OTTAWA, ON  
613-822-1488  
  
www.powerprecast.com

**CONCRETE TYPE:** SCC  
**CONCRETE:** 45MPa  
**AIR CONTENT:** 6.5% ± 1.5%  
**REINFORCEMENT :** STEEL TO CSA CAN  
A23.4-05 / A23.3. G30.18 Fy=400MPa

**WEIGHT:**  
Bottom - 15,957lbs / 7,253kg  
Top - 13,538lbs / 6,154kg  
Pad - 4,118lbs / 1,872kg  
Riser - 1,993lbs / 906kg

**SHEET:**  
1/1  
  
**DWG NO.**  
E - 2.09

**DRAWN BY:**  
E.ZHOU  
  
**DATE:**  
DEC/2020

**6x12 Ottawa Hydro Switchgear Manhole**  
Top and Bottom - UCS0025 with Spacer and Pad  
  
REFERENCE HYDRO OTTAWA UCS0025 (TOP, BOTTOM , RISER) UCS0026 (PAD)  
PPS REFERENCE: 409210-TOP 409208-BOTTOM 409212-RISER 412135-PAD