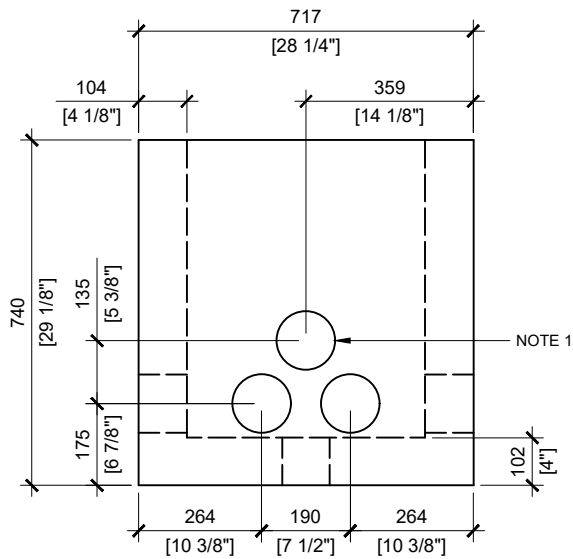
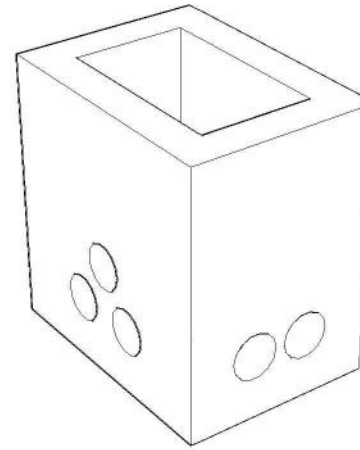
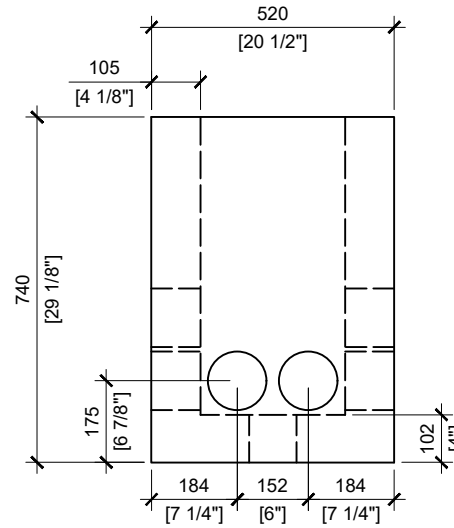


TOP VIEW  
SCALE 1:16



FRONT VIEW  
SCALE 1:16



RIGHT VIEW  
SCALE 1:16

**GENERAL NOTES:**

1. CABLE ENTRY OPENINGS - 4- $\frac{3}{4}$ " PVC SEALS
2. DELIVERY IS MADE BY CRANE-EQUIPPED TRUCKS
3. EXCAVATION MUST BE READY, SAFE AND ACCESSIBLE FOR UNLOADING FROM THE REAR OF THE TRUCK.
4. MIN OVERHEAD CLEARANCE OF 18FT IS REQUIRED
5. ALL UNITS MUST BE HANDLED WITH PROPER LIFTING EQUIPMENT (I.E. SPREADER BAR)
6. ALL DIMENSIONS ARE IN MILLIMETRES UNLESS OTHERWISE
7. AS PER OPSD 2112.050



**MANUFACTURED:**  
OTTAWA, ON  
613-822-1488

www.powerprecast.com

**CONCRETE TYPE:** SCC  
**CONCRETE:** 45MPa  
**AIR CONTENT:** 6.5%  $\pm$  1.5%  
**REINFORCEMENT:** STEEL TO CSA CAN  
A23.4-05 / A23.3. G30.18 Fy=400MPa

**WEIGHT:**  
869lbs / 395kg

**SHEET:**  
1/1

**DRAWN BY:**  
E.ZHOU

**DWG NO.**  
E - 2.04

**DATE:**  
DEC/2019

**J-6.31 TRAFFIC CONTROL HANDHOLE**

PPS REFERENCE: 409270