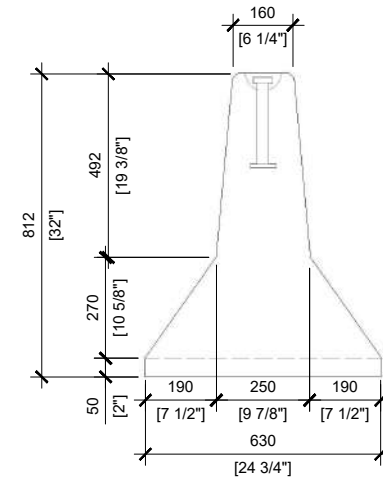
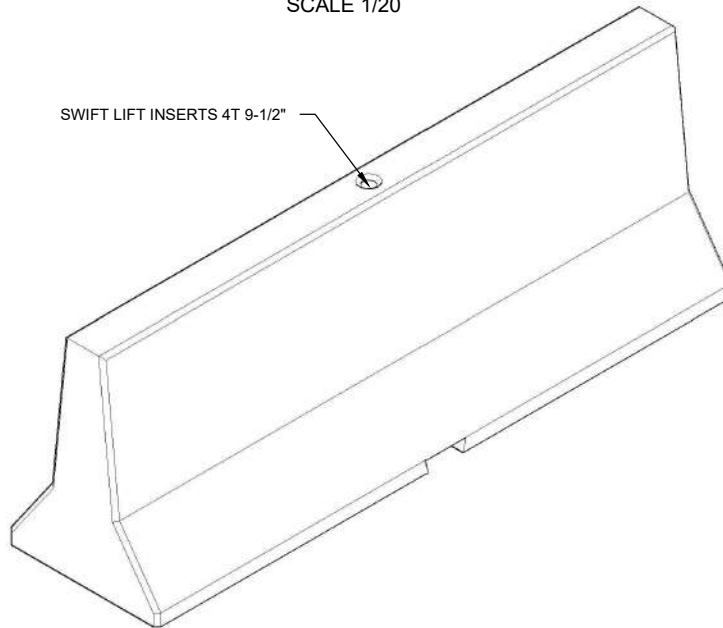




FRONT VIEW  
SCALE 1/20



SECTION A  
SCALE 1/20



**GENERAL NOTES:**

1. ALL UNITS MUST BE HANDLED WITH PROPER LIFTING EQUIPMENT (I.E. SPREADER BAR)
2. REINFORCING SHALL BE SIZE SPECIFIED AND GRADE 400W DEFORMED STEEL BARS. CONCRETE COVER SHALL BE 50MM MINIMUM
3. ALL CONCRETE EDGES SHALL HAVE 15X45° CHAMFER
4. WELDS SHALL BE ACCORDING TO CSA W59 AND CSA W186
5. ALL DIMENSIONS ARE IN MILLIMETERS UNLESS OTHERWISE SHOWN.



**MANUFACTURED:**  
OTTAWA, ON  
613-822-1488

www.powerprecast.com

**CONCRETE TYPE:** SCC  
**CONCRETE:** 45MPa / 6,526PSI  
**AIR CONTENT:** 6.5% ± 1.5%  
**REINFORCEMENT:** STEEL TO CSA CAN  
A23.4-05 / A23.3. G30.18 Fy=400MPa

**WEIGHT:** 3,542lbs / 1,610kg

**SHEET:**  
1/1

**DWG NO.**  
B - 1.07

**DRAWN BY:**  
A.A-Hamid

**DATE:**  
DEC/2019

**8' MEDIAN BARRIER**

PPS REFERENCE: 409196